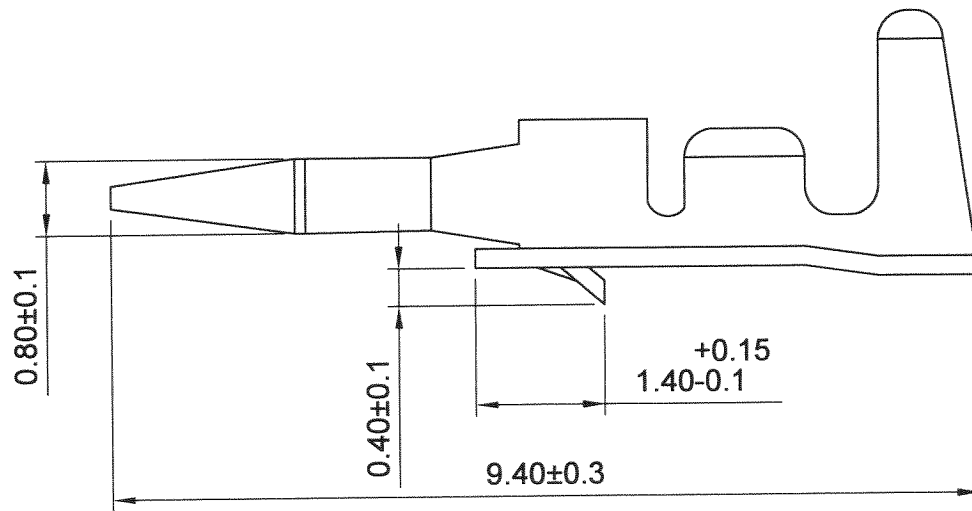
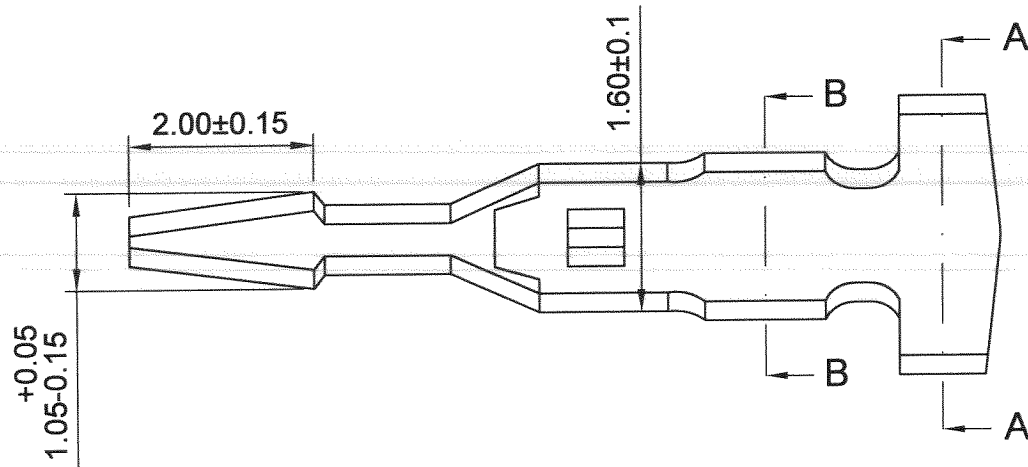
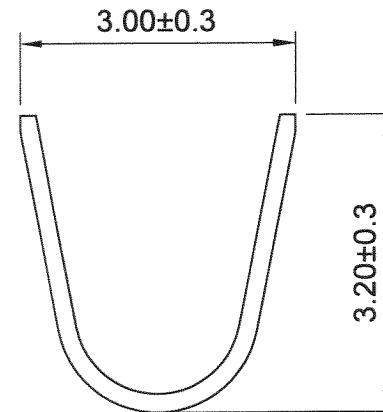


RoHS  
Compliant  
2002/95/EC

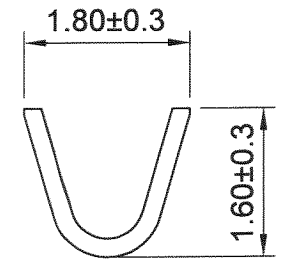


THICKNESS : 0.2mm  
 MATERIAL : BRASS, TIN PLATED  
 CURRENT RATING : 3A AC, DC  
 VOLTAGE RATING : 250V AC, DC  
 APPLICABLE WIRE RANGE : AWG#22-28  
 TERMINAL SOLDER DIRECTLY TO P.C.BOARD

MATCHED HSG : 250A-S1-xxP2



SECTION A-A



SECTION B-B

**JAWS**® 兆旭股份有限公司  
 JAWS CO., LTD.  
 7F-1, NO.31, Lane 169, Kang Ning Street,  
 Hsichih, Taipei Hsien, Taiwan.  
 TEL: 886-2-2692-2898  
 FAX: 886-2-2692-2618  
 Http://www.jaws.com.tw

THIRD ANGLE PROJECTION		DESIGN UNITS <input checked="" type="checkbox"/> mm <input type="checkbox"/> INCH
SIZE: A4	SCALE: FREE	SHEET: 1/1
CPN NO.:		DWG NO.:
DAN NO.: S9707-056		JAWS-SOP-250A002

TITLE: 2.5mm SCN TERMINAL 180°	
PARTS NO.: 250A-S1-TBT2	
DWG NO.:	REV.
JAWS-SOP-250A002	01

GENERAL TOLERANCES:	
1~10	±0.20
10~20	±0.30
20~40	±0.40
40 UP	±0.50

DRAWN	游熾瑩	DATE	97/07/23
CHECK	郭坤峰	DATE	97.7.23
APPROVE	Wen	DATE	97.7.23